

# MODULYS TC

from 3 000 to 9 000 VA

a modular UPS

for telecommunications applications

## The solution for supplying power systems

- Thanks to its particular architecture, designed especially for the telecoms sector, the **Mod-TC** combines batteries with extended back-up time with high capacity.
- **Mod-TC** is the ideal solution for isolated, unmanned installations, such as radio stations or links, mobile radio stations for cellular phone networks and GSM - GPRS - UMTS repeaters.

## Batteries and a charger adapted to lengthy back-up times

- Batteries have a lifespan of 10 years (AGM-VRLA technology).
- Battery protection (fuses) connected by boards.
- Front battery access (easy maintenance).
- To guarantee constant and reliable operation, the 30 A battery charger provides rapid and stable recharging of 48 V – 100 Ah batteries after each period of back-up.

## Five models available with different architectures

- The **Mod-TC 2XX** stand alone unit provides the ideal solution for applications which do not require an extended back-up time (more than 8 hours for the **Mod-TC 230**) and will not need to be upgraded.
- **Mod-TC 3XX** the redundant modular system.
- **Mod-TC 360** and **Mod-TC 390**. These are flexible, modular, redundant systems to which additional power modules may be installed to increase power or to obtain an operating redundancy N + 1.

Mod-TC 230-245-260



MOD 047B 1 CAT

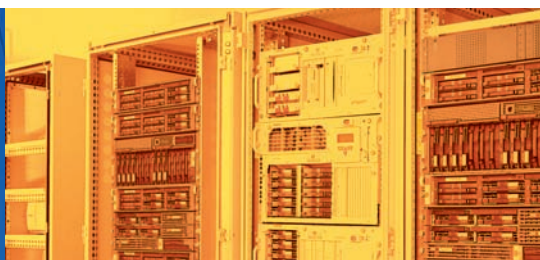


MOD 048 B 1 CAT

Mod-TC 360-390

Your protection  
for

- > e.business
- > Computer networks
- > Telecommunications



## An adaptable system

| Mod-TC     | VA   | Typical back-up time <sup>(1)</sup> |      | Expandable up to |                             |
|------------|------|-------------------------------------|------|------------------|-----------------------------|
|            |      | standard                            | max. | power            | back-up time <sup>(2)</sup> |
| <b>230</b> | 3000 | 110                                 | 420  | 3000             | 1200                        |
| <b>245</b> | 4500 | 60                                  | 270  | 4500             | 630                         |
| <b>260</b> | 6000 | 45                                  | 190  | 6000             | 480                         |
| <b>360</b> | 6000 | 110                                 | /    | 9000             | 550                         |
| <b>390</b> | 9000 | 70                                  | /    | 9000             | 330                         |

(1) Back-up time at 75% of the load.

(2) Back-up time with additional cabinets, charger included.

## Standard equipment

- Two slots for communication boards on **Mod-TC 360** and **390**.
- RS 232/485 serial port (except **TC 230**).
- Signal contacts relay card.
- Separate bypass input on **Mod-TC 245 - 260-360 - 390**.

## Accessories

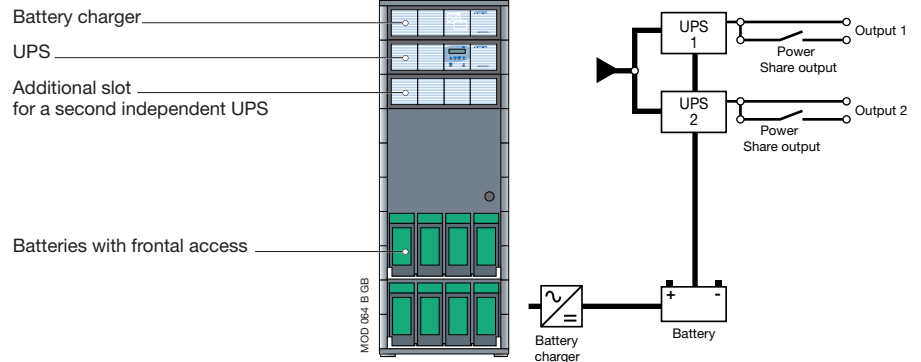
- Temperature sensor on **Mod-TC 360** and **390**.

## Communication options

- Dry contacts relay card.
- Advanced communication card.
- Remote monitoring and control kit.
- **NET VISION** interface for LAN Ethernet network [Info. p. 87].

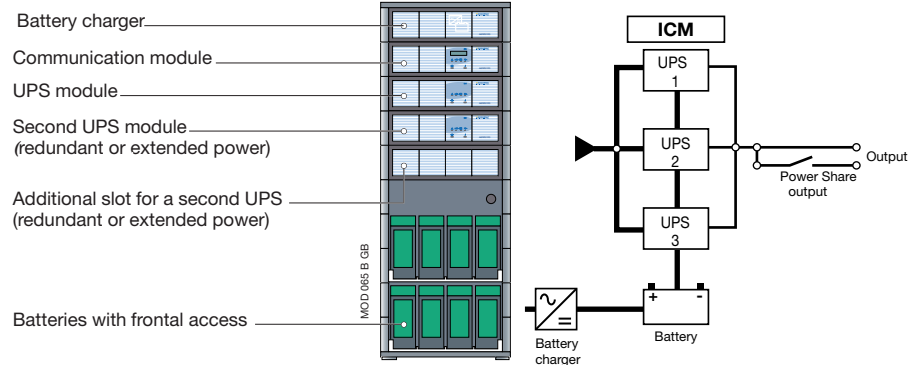
## Basic configurations

### Mod-TC 2XX system



| Model                 | <b>Mod-TC 230</b> | <b>Mod-TC 245</b> | <b>Mod-TC 260</b> |
|-----------------------|-------------------|-------------------|-------------------|
| Mod-RK                | 1 x 3000VA        | 1 x 4500 VA       | 1 x 6000 VA       |
| Battery (48V - 100Ah) | 1                 | 1                 | 1                 |

### Mod-TC 3XX system



| Model                 | <b>Mod-TC 360</b> | <b>Mod-TC 390</b> |
|-----------------------|-------------------|-------------------|
| Mod-Power             | 2 x 3000 VA       | 2 x 4500VA        |
| Battery (48V - 100Ah) | 2                 | 2                 |

## Technical Data

| UPS TYPE                                  | <b>Mod-TC 230</b>                                       | <b>Mod-TC 245</b> | <b>Mod-TC 260</b> | <b>Mod-TC 360</b> | <b>Mod-TC 390</b> |
|---|---|-------------------|-------------------|-------------------|-------------------|
| Input phases                              | 1 ph  | 1 ph/3 ph         | 1 ph/3 ph         | 1 ph              | 1 ph/3 ph         |
| Input voltage                             | 230 V (1ph) or 400 V (3 ph + N) ± 20%                   |                   |                   |                   |                   |
| Input frequency                           | from 45 to 65 Hz  |                   |                   |                   |                   |
| Input power factor                        | > 0.98  |                   |                   |                   |                   |
| Input current distortion                  | sinusoidal absorption (THDI < 6%)                       |                   |                   |                   |                   |
| Output voltage                            | 230 V (1 ph) ± 3% (can be configured for 208/220/240 V) |                   |                   |                   |                   |
| Nominal output power (VA)                 | 3000  | 4500              | 6000              | 6000              | 9000              |
| Nominal output power (W)                  | 2100  | 3150              | 4200              | 4200              | 6300              |
| Redundant N + 1 up to (VA) <sup>(1)</sup> | /   | /                 | /                 | 6000              | 9000              |
| Two independent UPS <sup>(1)</sup>        | 3000 + 3000   | 4500 + 4500       | 6000 + 6000       | /                 | /                 |
| AC/AC global efficiency                   | 90%   |                   |                   |                   |                   |
| Battery type                              | long life battery (sealed, maintenance free)            |                   |                   |                   |                   |
| Back-up time                              | 1 to 8 hours  |                   |                   |                   |                   |
| Battery tray (100 Ah 48 V) <sup>(2)</sup> | 1   | 1                 | 1                 | 2                 | 2                 |
| Recharge period                           | < 8 hours   |                   |                   |                   |                   |
| Safety/EMC standards                      | EN50091-1-1/EN50091-2                                   |                   |                   |                   |                   |
| Dimensions W x D x H (mm)                 | 600 x 600 x 1425  |                   |                   |                   |                   |
| Operating ambient temperature             | 0 °C to + 40 °C (15 °C to 25 °C for best battery life)  |                   |                   |                   |                   |

### STANDARDS

|                        |                        |
|------------------------|------------------------|
| Safety                 | (EN) IEC 62040-1-1     |
| Performance & topology | (EN) IEC 62040-3       |
| EMC standard           | EN 50091-2/IEC 62040-2 |
| Product certification  | CE                     |
| IP rating              | IP 20                  |

(1) With the addition of a supplementary UPS module. - (2) Internally or externally extendable (additional cabinet with battery charger).