

## VERTELIS SUITE : new design and features for SOCOMEC's energy management software

Benfeld, 29th August 2014

***SOCOMEK is proud to announce the latest version of its VERTELIS software offering dedicated to energy management in buildings, industry and infrastructures of all types. Combined with revolutionary changes in the DIRIS range, this revamped software suite means SOCOMEC can offer complete single and multi-site architectures that are scalable and easy to implement.***

VERTELIS SUITE has a host of new functionalities combined with a more intuitive interface that guides the user step by step.

The new VERTELIS suite comprises two software programmes : WEBVIEW and HYPERVIEW

### Energy monitoring and analysis : WEBVIEW

The WEBVIEW web server embedded in the DIRIS G communication gateway enables the monitoring of up to 32 devices, with display of all energy parameters as well as the distribution of consumption across the entire facility. Alarm settings programmed by the user that generate automatic email notification provide further monitoring capabilities. Access to the WEBVIEW programme is assured using a simple PC or tablet web browser.

WEBVIEW automatically recognises equipment connected to the network and centralises their measurement data via a clear and user-friendly interface. What's more, a guided configuration of the metering plan means users can have an instant view of energy consumption over the year for each utility (electricity, water, gas) and usage (heating, lighting, etc.).

Real time views



Alarm display



Consumption monitoring



## Efficient energy management : HYPERVIEW

HYPERVIEW is an EMS/BMS software for analysing multi-utility energy data that offers an at-a-glance view of relevant indicators and parameters on the control dashboard. The software is available as a local or centralised solution, or via cloud-based hosting.

With HYPERVIEW, the user is guided through all the essential steps :

- 1) Automatic collection of all energy consumption data (electricity, water, gas, etc.)
- 2) Data monitoring (access to measurements and actions to take in case of anomalies)
- 3) Analysis of electrical parameters
- 4) Analysis of multi-utility energy consumption data
- 5) Analysis of energy costs
- 6) Communication of energy and environmental gains (control dashboard and indicators)

Consumption analysis



Dashboards



Energy labeling



## VERTELIS for implementing a coherent energy performance plan

Implementing an approach to energy performance is no pushover for energy and facility managers, both on industrial sites and commercial premises.

The VERTELIS software suite gives you the tools for reaching your energy targets to meet regulations, implement an effective continuous improvement process and communicate your environmentally-aware credentials. VERTELIS HYPERVIEW facilitates each step of your energy efficiency policy.

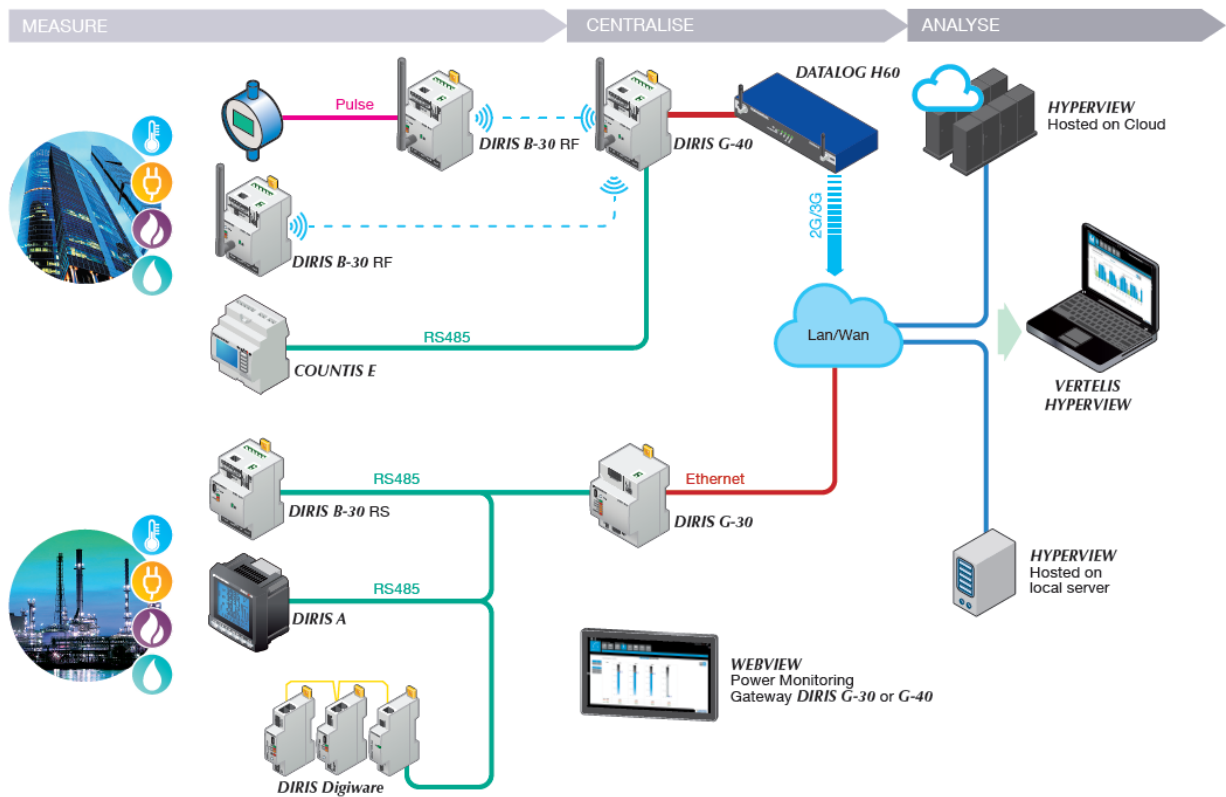


## A complete software offering

VERTELIS SUITE is a comprehensive solution that includes :

- sensors
- meters
- measurement units
- energy management software
- personalised services (system/facility assessment and definition, commissioning, maintenance, training).

Socomec's global solution is available in many types of architecture designed in accordance with the requirements of the site(s).



Example of architecture

Web pages : [click here](#)

## ABOUT SOCOMECH

Founded in 1922, SOCOMECH is an industrial group with a workforce of over 3000 people around the world in 21 subsidiaries. Our core business: the availability, control and safety of low voltage electrical networks... with increased focus on our customers' power performance. In 2012, SOCOMECH posted turnover of 441 million euros.



## FOR MORE INFORMATION

Press contact: Virginie GUYOT  
Offer Communication Manager  
Tel. : +33 (0)3 88 57 78 15  
E-Mail: [virginie.guyot@socomec.com](mailto:virginie.guyot@socomec.com)

[www.socomec.com](http://www.socomec.com)